



STUDENT SATISFACTION SURVEY REPORT FOR THE AY 2021-22

Around 36% of students participated in the survey

QUESTION NUMBER	AVERAGE SCORE	QUESTION NUMBER	AVERAGE SCORE
1	4.49	11	4.40
2	4.44	12	4.35
3	4.47	13	4.29
4	4.44	14	4.19
5	4.48	15	4.32
6	4.39	16	4.30
7	4.30	17	4.31
8	4.38	18	4.26
9	4.29	19	4.32
10	4.42	20	4.42

1. How much of the syllabus was covered in the class?

5 – 85 to 100%

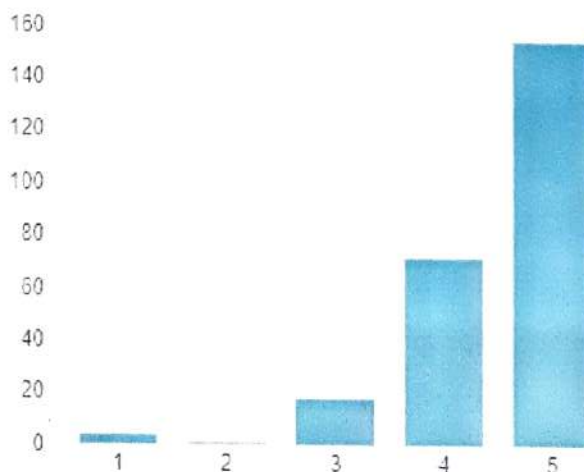
4 – 70 to 84%

3 – 55 to 69%

2 – 30 to 54%

1 – Below 30%

4.49 Average Rating



2. How well did the teachers prepare for the classes?

5 – Thoroughly

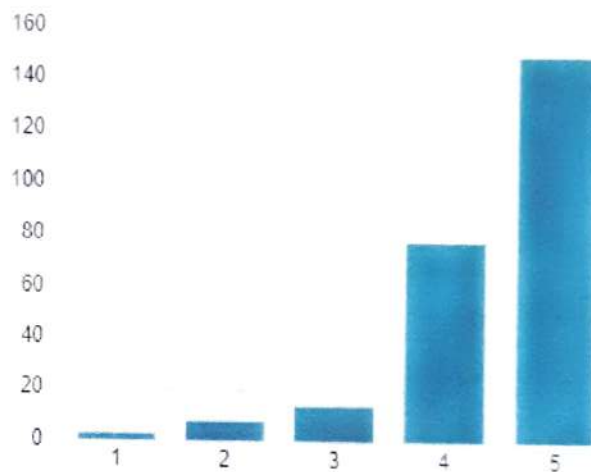
4 – Satisfactorily

3 – Poorly

2 – Indifferently

1 – Won't teach at all

4.44 Average Rating



3. How well were the teachers able to communicate?

5 – Always effective

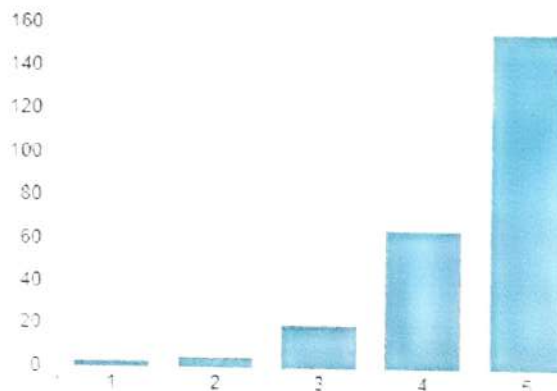
4 – Sometimes effective

3 – Just satisfactorily

2 – Generally ineffective

1 – Very poor communication

4.47 Average Rating



4. The teacher's approach to teaching can best be described as

5 – Excellent

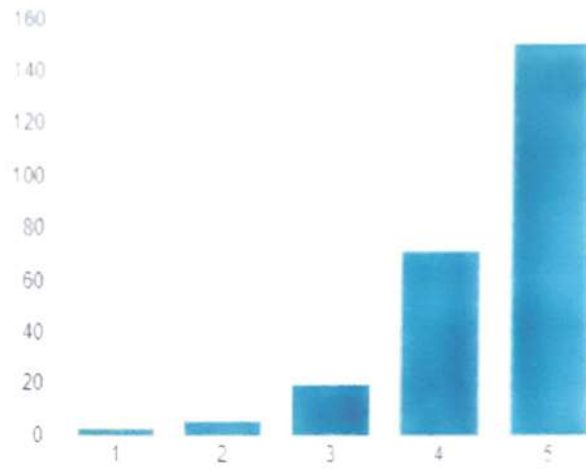
4 – Very good

3 – Good

2 – Fair

1 – Poor

4.44 Average Rating



5. Fairness of the internal evaluation process by the teachers.

5 – Always fair

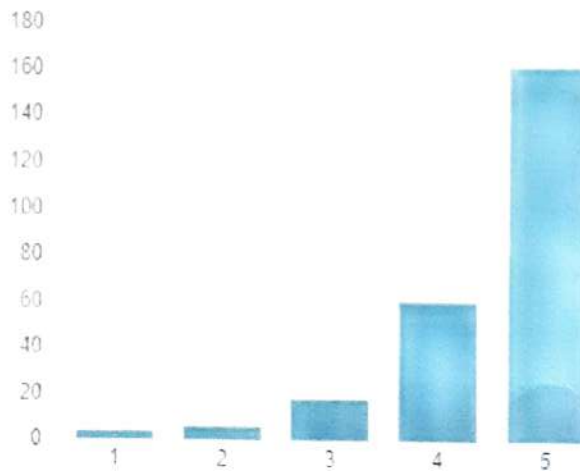
4 – Usually fair

3 – Sometimes unfair

2 – Usually unfair

1 – Unfair

4.48 Average Rating



6. Was your performance in assignments discussed with you?

5 – Every time

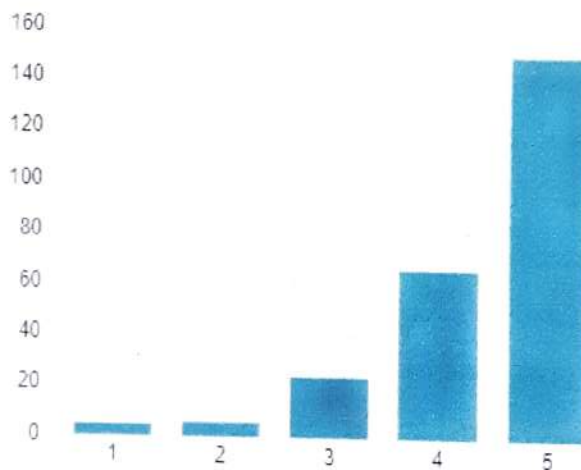
4– Usually

3– Occasionally/Sometimes

2– Rarely

1– Never

4.39 Average Rating



7. The institute takes active interest in promoting internship, student exchange, field visit opportunities for students.

5– Regularly

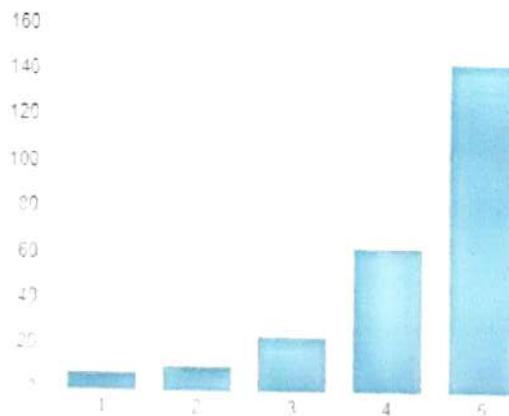
4– Often

3– Sometimes

2– Rarely

1– Never

4.30 Average Rating



8. The teaching and mentoring process in your institution facilitates you in cognitive, social and emotional growth.

5– Significantly

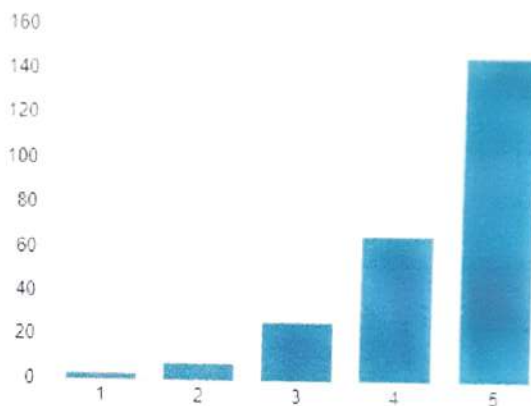
4– Very well

3– Moderately

2– Marginally

1– Not at all

4.38 Average Rating



9. The institution provides multiple opportunities to learn and grow.

5– Strongly agree

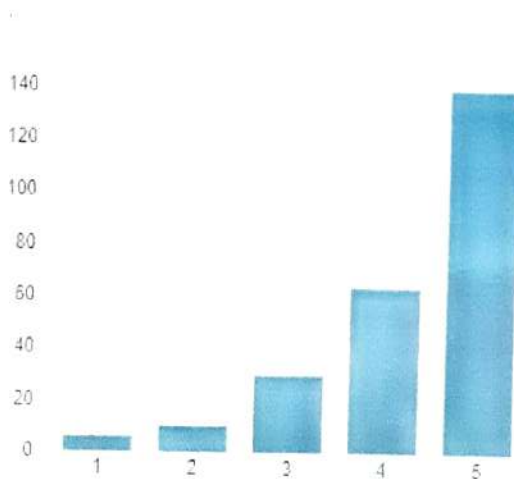
4– Agree

3– Neutral

2– Disagree

1– Strongly disagree

4.29 Average Rating



10. Teachers inform you about your expected competencies, course outcomes and programme outcomes.

5 – Every time

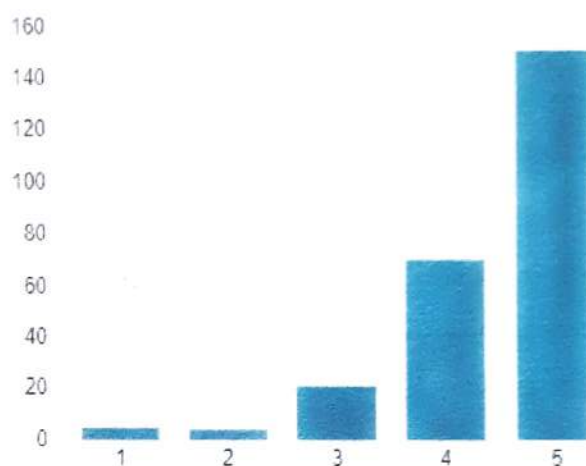
4 – Usually

3 – Occasionally/Sometimes

2 – Rarely

1 – Never

4.42 Average Rating



11. Your mentor does a necessary follow-up with an assigned task to you.

5 – Every time

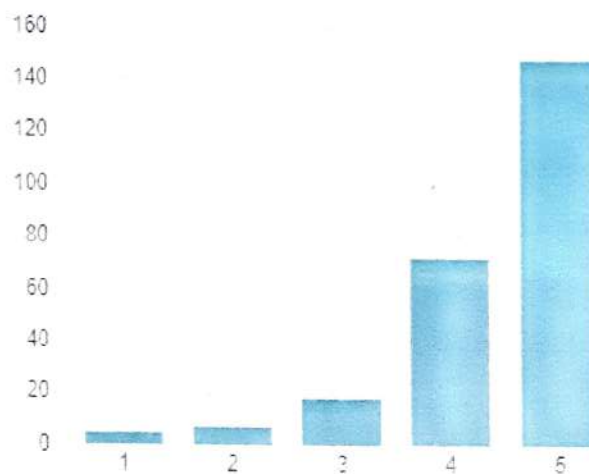
4 – Usually

3 – Occasionally/Sometimes

2 – Rarely

1 – I don't have a mentor

4.40 Average Rating



12. The teachers illustrate the concepts through examples and applications.

5 – Every time

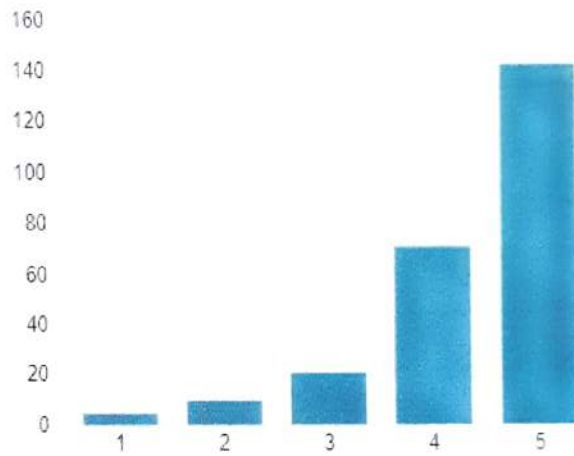
4– Usually

3– Occasionally/Sometimes

2– Rarely

1– Never

4.35 Average Rating



13. The teachers identify your strengths and encourage you with providing right level of challenges.

5– Fully

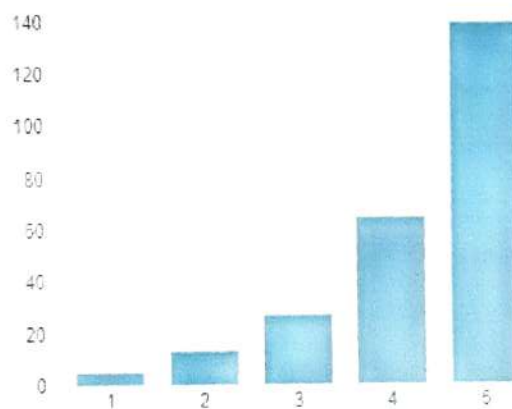
4– Reasonably

3– Partially

2– Slightly

1– Unable to

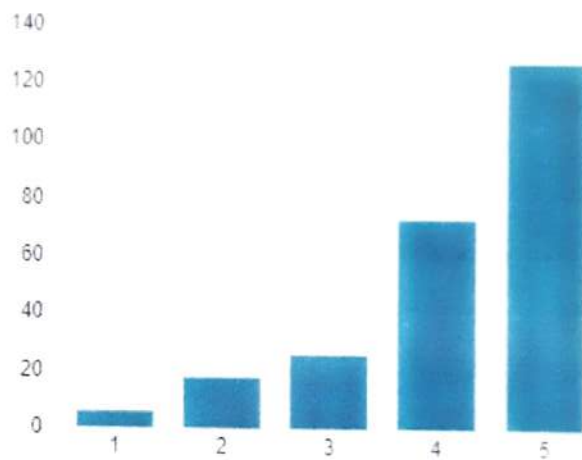
4.29 Average Rating



14. Teachers are able to identify your weaknesses and help you to overcome them.

- 5 – Every time
- 4– Usually
- 3– Occasionally/Sometimes
- 2– Rarely
- 1– Never

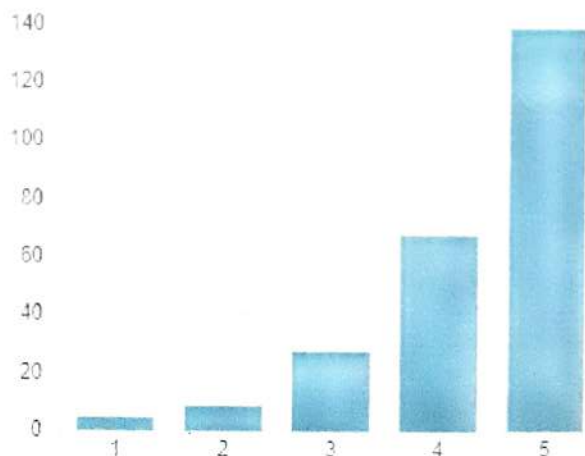
4.19 Average Rating



15. The institution makes effort to engage students in the monitoring, review and continuous quality improvement of the teaching learning process.

- 5 – Strongly agree
- 4– Agree
- 3– Neutral
- 2– Disagree
- 1– Strongly disagree

4.32 Average Rating



16. The institute/ teachers use student centric methods, such as experiential learning, participative learning and problem solving methodologies for enhancing learning experiences.

5 – To a great extent

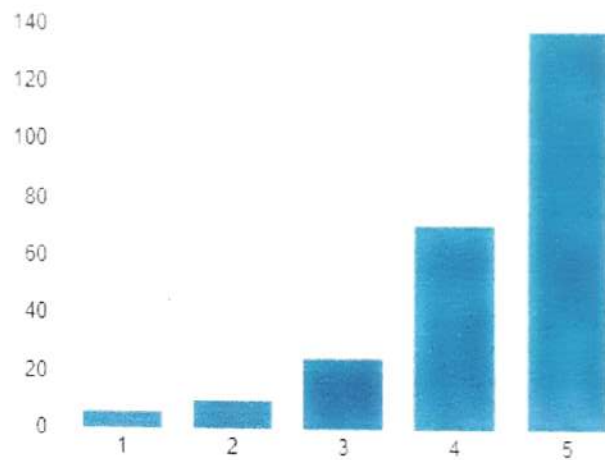
4– Moderate

3– Some what

2– Very little

1– Not at all

4.30 Average Rating



17. Teachers encourage you to participate in extracurricular activities.

5 – Strongly agree

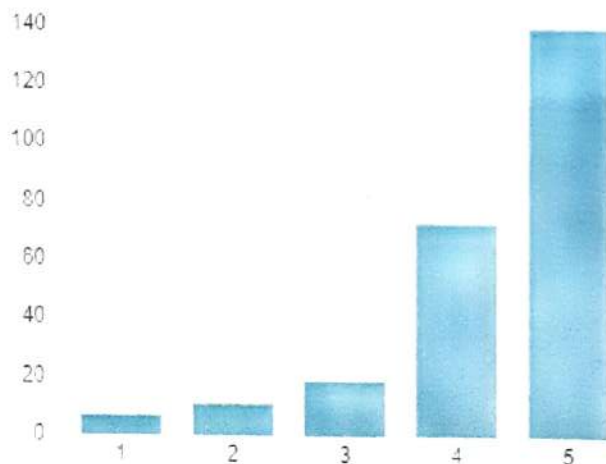
4– Agree

3– Neutral

2– Disagree

1– Strongly disagree

4.31 Average Rating



18. Efforts are made by the institute/ teachers to inculcate soft skills, life skills and employability skills to make you ready for the world of work.

5 – To a great extent

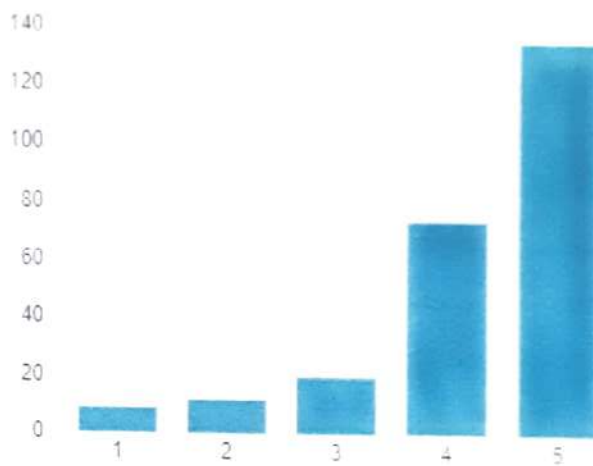
4 – Moderate

3 – Some what

2 – Very little

1 – Not at all

4.26 Average Rating



19. What percentage of teachers use ICT tools such as LCD projector, Multimedia, etc. while teaching.

5 – Above 90%

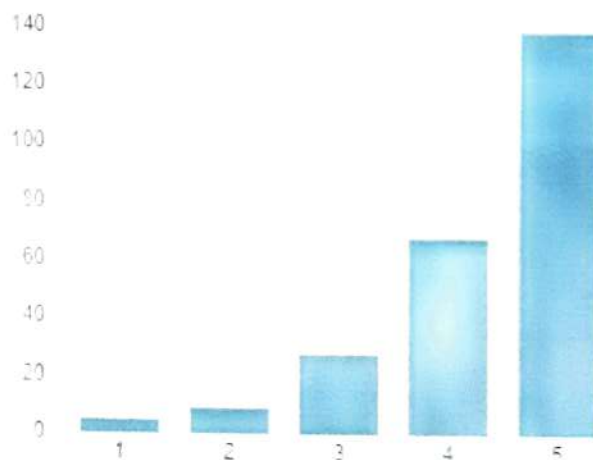
4 – 70 – 89%

3 – 50 – 69%

2 – 30 – 49%

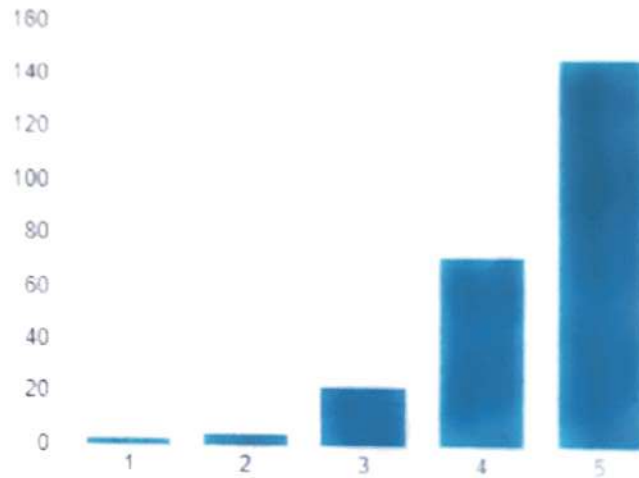
1 – Below 29%

4.32 Average Rating



20. The overall quality of teaching-learning process in your institute is very good.
- 5 – Strongly agree
 - 4 – Agree
 - 3 – Neutral
 - 2 – Disagree
 - 1 – Strongly disagree

4.42 Average Rating



R.2 Ramasamy G
 DIRECTOR-IQAC 3/9/22
 Director - IQAC
 Don Bosco Institute of Technology
 Mysore Road, Kumbalagodu
 Bengaluru-560 074

smv
 PRINCIPAL 3/9/22
 DBIT
PRINCIPAL
 Don Bosco Institute of Technology
 Kumbalagodu, Mysore Road,
 Bangalore - 560 074.